



# SIXTH FORM PROSPECTUS

A Welsh Medium Sixth  
form for Young People  
aged 16-18

# WELCOME

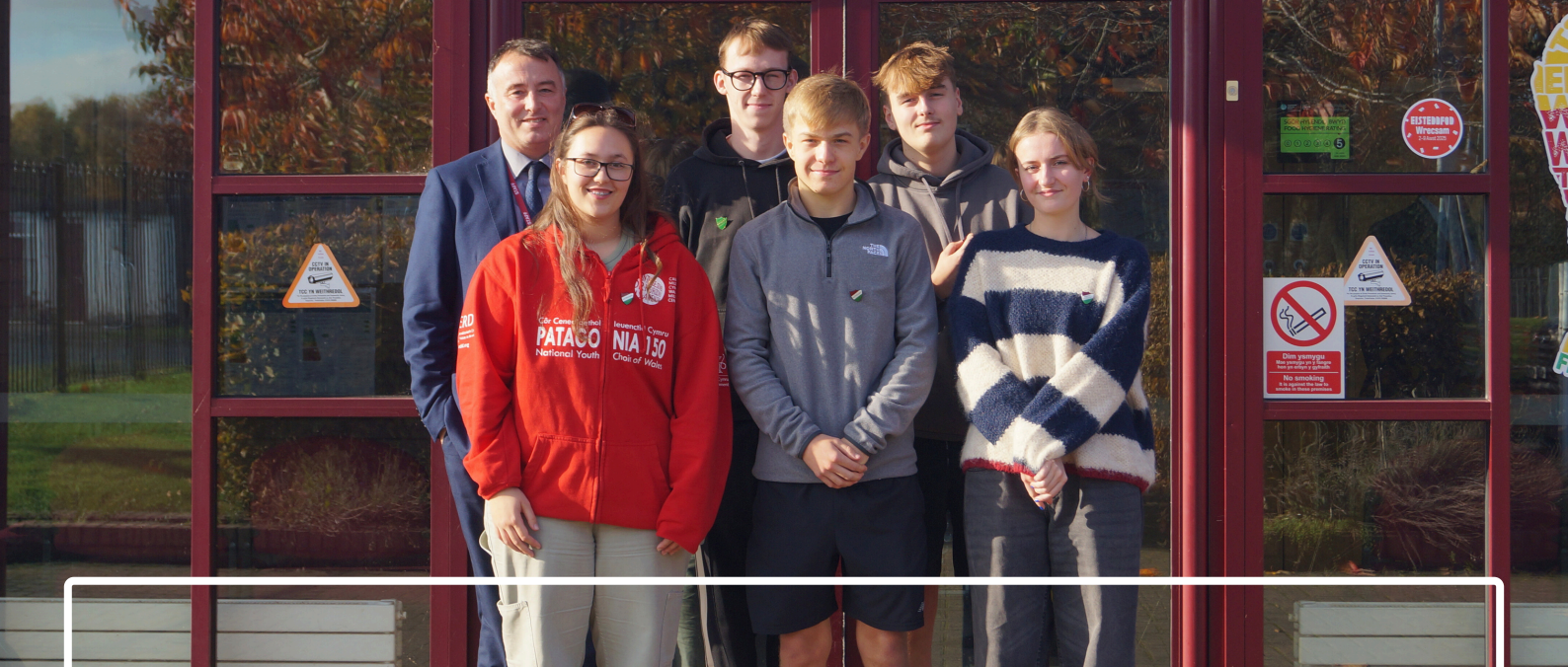


We are pleased to introduce Ysgol Morgan Llwyd's sixth form prospectus for 2026 and I hope that it will be of assistance to you when making some important decisions. The Sixth Form in Ysgol Morgan has a long and thriving tradition, and there is a warm welcome for Year 11 students to be part of that tradition.

The school takes great pride in its sixth form; with respect to its high academic success and also the sixth form's contribution to the whole school life. Once again this year, the sixth form won praise in a number of different fields; the A Level results were commendable and every student succeeded in being offered a place at University. On top of this, a number of students won university scholarships. We aim for the highest standards and expect total dedication to each of Ysgol Morgan Llwyd's principles, the only Welsh medium secondary school in Wrexham.

*Ms Heledd Stanford*  
**Head of Sixth Form**





# CONTACT DETAILS



01978 315050



Ysgol Morgan Llwyd, Cefn Road,  
Wrexham, LL13 9NG



[www.ysgolmorganllwyd.cymru](http://www.ysgolmorganllwyd.cymru)



[bocspost@ysgolmorganllwyd.  
wrexham.sch.uk](mailto:bocspost@ysgolmorganllwyd.wrexham.sch.uk)



@ymll\_wrexham



@YsgMorganLlwyd



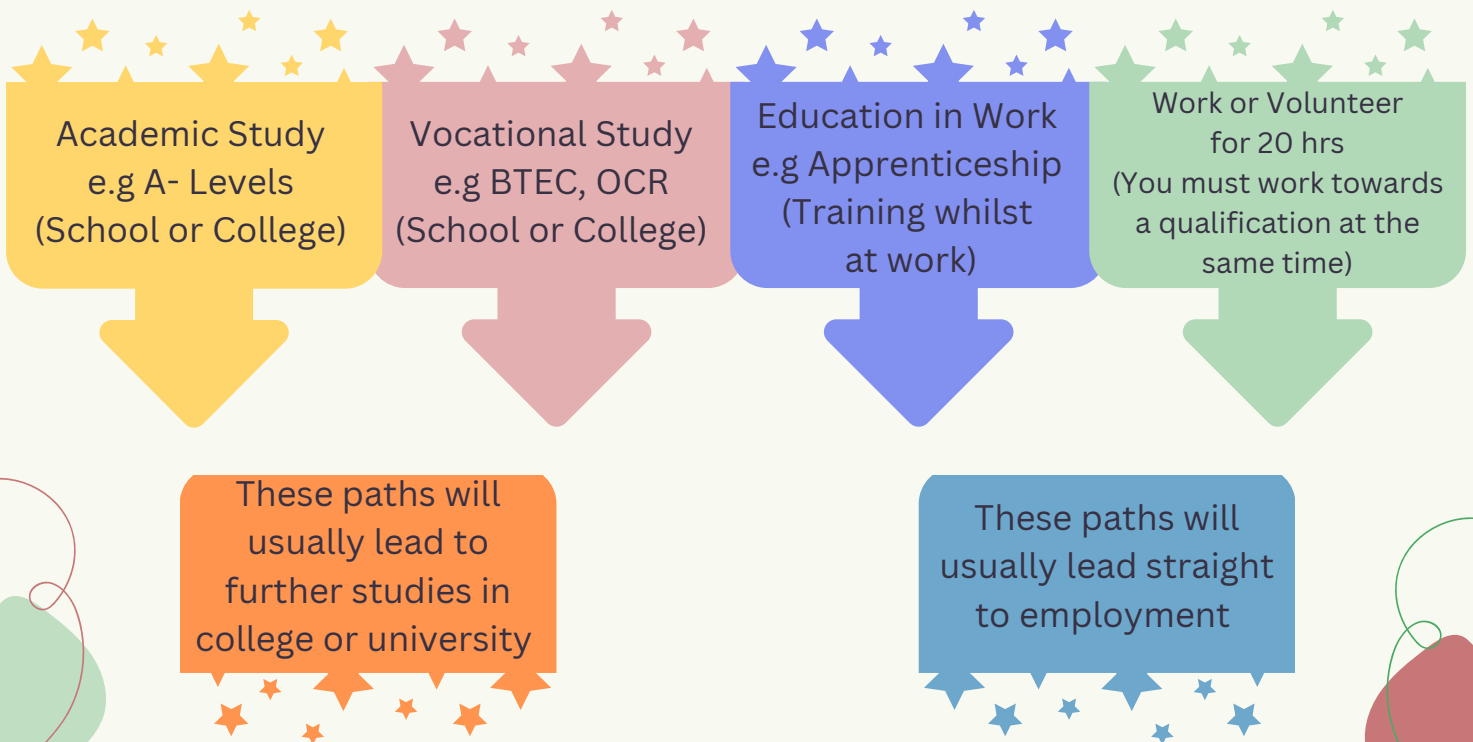
Ysgol Morgan Llwyd Wrexham

# POST 16 OPTIONS

The end of year 11 is a very exciting time. For the first time you can choose what to study and where you want to study. The choices you make will depend on factors such as;

- What you wish to do in the future
- What GCSE grades you achieved
- How you like to learn

***There are four possible paths at the end of year 11***





# WHY YSGOL MORGAN LLWYD?

Results are  
consistent

Top 10%  
nationally

Continue your  
studies through  
the medium of  
Welsh

A wide range  
of A-Levels and  
Vocational Courses

An opportunity  
to take advantage  
of schools extra  
curricular  
activities



A homely,  
supportive  
environment

Small classes,  
plenty of 1-1  
attention

A team of teachers  
who know you  
personally





# COURSES

| <b><i>A-Levels</i></b>   |                           |
|--|---------------------------|
| Art & Design   | Biology                   |
| Business Studies   | Chemistry                 |
| Drama  | English Literature        |
| French   | Geography                 |
| Health & Social Care   | History                   |
| Law  | Mathematics               |
| Media Studies  | Music                     |
| Music  | Photography               |
| Physical Education   | Physics                   |
| Politics   | Psychology                |
| Product Design & Fashion and Textiles  | Engineering Design        |
| Religious Studies  | Welsh                     |
| <b><i>Vocational</i></b>   |                           |
| Applied Business (Level 3)   | Public Services (Level 3) |
| <i>Please note that a sufficient number of pupils are required to run each course. Please let us know if you are interested in a different subject as we might be able to make alternative arrangements.</i> |                           |

# CHOOSING COURSES- FAQ'S

## ***What GCSE grades do I need to study A Levels?***

Generally, you should have passed at least 5 GCSE's A\*-C in order to study at A Level. Individual subjects will ask that you have achieved a grade C or above, but this varies. Speak to the subject leaders to find out more.

## ***Should I choose an A Level or a vocational course?***

Generally, the vocational courses are more practical, that is, they contain more assignments and less exams. Level 3 BTEC is equivalent to an A Level and is accepted by most universities but not all. Level 2 courses are a little easier and these do not equate to an A Level. If you are better at working on coursework, the BTEC will suit you better but if you perform well in exams, the A Level will be suitable. You should consider the value of the course to your choice of career.





# CHOOSING COURSES- FAQ'S

## ***What is the difference between AS and A Level?***

Advance Subsidiary is the name for the first half of the A Level course. At the end of year 12, you will receive an AS grade. You can then choose to keep that grade or follow the full A Level course. The AS mark will count 40% of a full A Level.





# CHOOSING COURSES- FAQ'S

## ***How many courses should I choose?***

Most of our students will choose to study 3 courses. Some might start off with 4, but since no University course require more than 3 A Levels, we recommend that all students concentrate on 3 bearing in mind that you will also be studying the Welsh Baccalaureate. Some pupils experiencing difficulties will be advised to study 2 A Levels + Bac.

## ***How many lessons will I have?***

5 lessons in each subject. Remembering that there are 30 lessons in each week, studying 3 subjects and the Baccalaureate equates to 19 lessons.



# CHOOSING COURSES- FAQ'S

## ***Can I re-sit a GCSE in the sixth form?***

There are Mathematics and English re sit lessons. These classes focus on reaching a 'C' grade.

## ***When will I have to decide on courses?***

We will ask applicants to submit an Application Form by 13/03/26 noting their initial choice of subjects. On the basis of these choices, we will draw up option columns. Final choices will not be made until they register in September, but you will not be able to choose more than one subject from the same column.





# CHOOSING COURSES- FAQ'S

***What if I want to choose more than one subject from one column?***

Unfortunately, this will not be possible as the lessons will run at the same time. Remember that we base the columns on your initial choice, therefore, if you are certain of your choices, note them.

***Will I be able to change my mind?***

We allow you to change course up to the end of September. After this, you will have missed too many lessons. You can drop a subject at anytime, but you must follow at least 2 A Levels (or equivalent).





# CHOOSING COURSES- FAQ'S

***I want to go to University in the future, but haven't decided on what to study. Which A Levels should I choose?***

A number of university courses will ask for a specific course e.g. Science to study Medicine. If you have a certain course in sight, go to the UCAS website to look for the requirements. Otherwise, choose courses you think you will enjoy and will be successful in them.

***Where can I get further advice?***

You can ask for advice from teachers, mentoring team, careers adviser and Head of Year.



# THE WIDER CURRICULUM

## ***Expertise***

3 X A-Levels or  
BTEC

## ***Independent Learning***

Individual research  
towards the  
Baccalaureate

## ***Personal Development***

PSE, extra curricular  
activities, work  
experience, enterprise,  
voluntary work/visits

## ***Expanse***

Skills projects for the  
BACC- communication, IT,  
problem solving, working  
with others, numeracy  
skills



# LIFE IN THE SIXTH FORM

- Being a member of the Sixth Form at Ysgol Morgan Llwyd means being a role model to the rest of the school with regards to behaviour, academic standards and use of the Welsh language. Many of the sixth formers will contribute to school work by leading and helping in clubs and activities.
- Representatives and head pupils are elected to lead the School Council's work and represent the school in different events. This work is important to ensure the pupil's voice is heard in the school.
- With these responsibilities come privileges; students in the sixth form are not expected to wear the official school uniform (but there is a clear dress code to follow) as they have more freedom on the site. Punctuality and full attendance is expected of every student. We ask our students to sign a contract at the beginning of year 12 agreeing to these conditions.





# LIFE IN THE SIXTH FORM

- Our new purpose built sixth form building, that has been designed specifically with our 6th form students in mind. Our new building is completely digital, and offers modern study areas, wi-fi connection and we encourage you to bring your own devices in order to make the most of your work both at school as well as your all important independent studies.
- The pupils will have regular contact with their tutors during mentoring time, at morning registration. The Head of the Sixth Form has an open door policy that allows the students to ask any thing at any time. The team will look at a report of comments on punctuality, attendance and performance every week and will respond as required in order to ensure that no one is underachieving.



# WHY STUDY LEVEL 3 IN ADVANCED SKILLS BACCALAUREATE WALES?

The Advanced Skills Baccalaureate Wales (AdvSBW) qualification is an exciting new Level 3 qualification that supports students to become effective, responsible and active citizens, equipping them with the skills for future study or to enter the job market.

The qualification has primarily been designed for students aged 16-19, and can be taken alongside other Level 3 qualifications, including A levels.

## **WHAT SKILLS WILL I DEVELOP?**

You will develop a range of skills which are attractive to employers, colleges and universities including:

### **Integral Skills**

- Planning and Organisation
- Critical Thinking and Problem Solving Creativity and Innovation
- Personal Effectiveness

### **Embedded Skills**

- Literacy
- Numeracy
- Digital Competence



## **HOW WILL I BE ASSESSED?**

### **Global Community Project (25%)**

You will select a global issue to investigate, share your knowledge with others and take part in a community action.

### **Future Destination Project (25%)**

You will gain an understanding of yourself, explore future employment and wellbeing goals, and plan how you can achieve this.

### **Individual Project (50%)**

You will plan, manage, and research a topic linked to your future education or career aspirations, and create a written dissertation or an artefact.

Assessments can be taken throughout the two-year course with external moderation in January and May. You are likely to complete the Individual Project in the second year.

## **CAREERS WITH AdvSBW**

This qualification allows you to develop important skills that you can take forward whether you are moving on to university, training or employment. Developing these skills will help you become an effective, responsible and active citizen and can have a profound effect on your future success and wellbeing.

# APPLIED BUSINESS BTEC



## ***Why choose this course?***

A very interesting and current course that gives the opportunity to those following the course to pursue further education or the world of work. The course is assessed through a combination of external exams and course work. There is a strong vocational element to the course. The needs of the course and assessment will enable the learner to apply their knowledge through studying and researching real business.

## ***Assessment***

It is likely the course will remain at 60% Coursework and 40% exam.

- Course content
- Finance
- Accounting
- Legal Structures
- Human Resources
- Production
- External Factors

## ***Entry requirements***

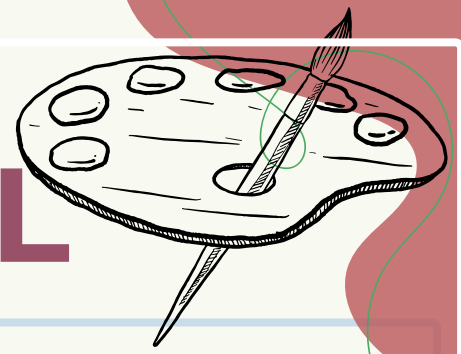
Before being accepted on the AS/Level 3 courses, you should have 5 GCSE grades A\* to C or an equivalent qualification. Ask your tutor for confirmation

## ***Progression Pathways***

Further Education – a number of former students have gone forward to study degree courses in the fields of business, law, managements, economics, accountancy and enterprise. A number have succeeded in securing employment with world famous companies such as Airbus, MBNA and Toyota. The pupils will gain a qualification through work and at the end of the scheme will have full time work or a degree qualification.



# ART & DESIGN AS/A-LEVEL



## ***Why choose this course?***

Because I really like the subject and like being creative” year 13 pupil

“I want a career connected to art” year 13 pupil

A very exciting and busy course that gives the pupils an opportunity to work to specific brief as well as the opportunity to develop personal interests through various mediums and techniques, such as illustrating, textiles, painting, pottery, sculpture, graphics, photography, printing and many more. There are many opportunities to choose your own theme, medium and artists.

“A great deal of work. The expectations are set high, but this will be good in the end when I have a good grade!!” year 13 pupil

## ***Assessment***

### ***AS Units***

Unit 1, a Personal Creative Investigation (40% of the A Level), this is assessed internally and moderated externally. You will produce the unit in a portfolio and/or sketch book.

### ***A2 Units***

Unit2, a Personal Investigation (36% of the A Level), this is assessed internally and moderated externally. You will produce the unit in a portfolio and/or sketch book.

Unit 3, an Externally Set Assignment, (24% of the A Level), this is assessed internally and moderated externally. You will produce the unit in a portfolio and/or sketch book. The finished piece for this unit is produced in a 15 hour exam in the Art Department

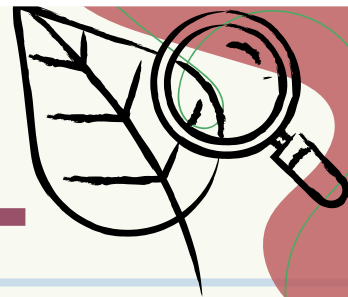
## ***Entry requirements***

The pupils should have a grade C or higher in GCSE Art and Design. Some exceptions are made depending on their performance in KS3.

## ***Progression Pathways***

A high percentage of the pupils progress to a foundation course (1 year) in art and design or gain a place on an art course involving art. To gain a place on these courses, pupils have to present a portfolio, their AS/A Level work is used to create the portfolio. The course can lead the individuals to a future in various careers related to Art, such as advertising, marketing, design, architecture, publishing, fashion, media, film, teaching and lecturing.

# BIOLOGY AS/A-LEVEL



## ***Why choose this course?***

Biology is the 'cutting edge' Science and it is in the news constantly: GM crops, cloning, DNA fingerprinting, vaccinations e.g. MMR, global warming, over-fishing.

You study the basic organisation of living organisms, and how they work and interact with the environment.

Opportunity to visit Chester Zoo to study conservation and biodiversity.

## ***Assessment***

### ***AS Unit 1***

Biological compounds

Cell structure, organisation and cell division

Cell membrane and transport

Enzymes, including medical and industrial application

Genetic code and protein synthesis

### ***AS Unit 2***

All organisms are linked through their evolutionary history.

Adaptations for gas exchange.

Adaptations for transport.

Adaptations for nutrition

### ***Practical Work***

Microscope work

Planning & carrying out investigations

Evidence of all practical work is to be kept in a workbook which can be used in University.

Unit 5 is a Practical Exam – to be done in Year 13.

- ***Written papers for AS Unit 1 and 2***
  - ***Each paper. 1hour 30mins***
- ***Each AS Unit paper 20% of A level qualification.***
- ***Written papers for A2 Unit 3 and 4.***
- ***Each paper 2 hours and 25% of A level qualification.***
- ***Supervised Practical Examination worth 10% of A level qualification.***
- ***Data response questions and one essay – type question which will be banded.***

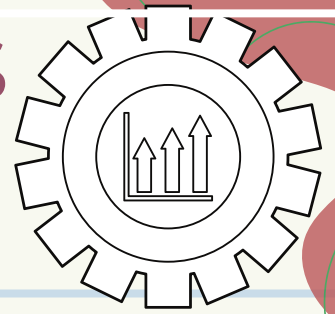
## ***Entry requirements***

Ideally, pupils will have gained a B grade or higher in GCSE Biology or an A grade in GCSE Science or Further Science.

## ***Progression Pathways***

Many students continue to study biology - related courses e.g. medicine, dentistry, pharmacy, physiotherapy, nursing, microbiology, biochemistry, marine biology, conservation.

# BUSINESS STUDIES AS/A-LEVEL



## ***Why choose this course?***

A very interesting and current course that gives the opportunity to those following the course to study a wide variety of topics. The course will give the students the opportunity to progress to further education or the world of work. The course is very broad and looks at elements such as marketing, finance, market research, accountancy, human resources and manufacturing. These are taught in a theoretical and practical manner.

## ***Assessment***

The course is assessed through external examinations only. There are four examination units in the course.

### ***AS Units***

Unit 1: The Business Framework (20%)

Unit 2: Business Functions (30%)

### ***A Level Units***

Unit 3 Business Decision Making (25%)

Unit 4 Business Strategy and Practice (25%). This is a synoptic exam which means that the exam is based on the whole syllabus.

## ***Entry requirements***

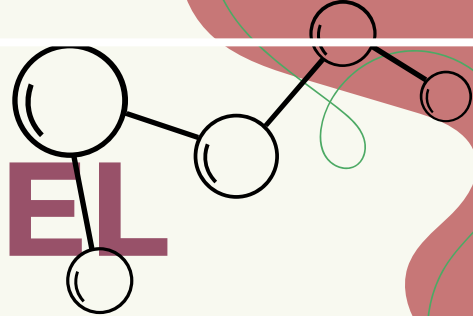
Before you are accepted onto the AS/ Level 3 courses, you should have 5 GCSE grades A\* to C or an equivalent qualification. Ask your tutor for confirmation.

## ***Progression Pathways***

Further Education – a large number of students have gone forward to study degree courses in the business, law, management, economic, accountancy and enterprise fields. A number have succeeded in ensuring places on employment schemes with world famous companies such as Airbus, MBNA and Toyota. These pupils will win a qualification whilst working and at the end of the scheme will have full time work and degree qualification. Recently, a number of pupils have been successful in winning their places at highly respected universities such as Durham, Loughbrough and Cardiff.



# CHEMISTRY AS/A-LEVEL



## ***Why choose this course?***

Chemistry is a subject that involves everything around us; the food we eat, the medicine we take, the quality of the air we breathe and the water we drink. The Chemistry course encourages you to study the way the earth's resources are used to produce energy and uses through chemical reactions. Chemistry has its place in improving the quality of life as Chemists form new materials for specific purposes.

We have a team of experienced teachers at Ysgol Morgan Llwyd who help the students to reach their full potential. 4.5 hours of Chemistry lessons are held weekly including practical work to strengthen the understanding of the different topics. There is additional support with tutorial lessons outside the lessons and materials to promote independent work and thorough revision.

Studying A Level Chemistry compliments the skills and knowledge taught in other subjects such as Biology and Mathematics but Chemistry is a good combination with a good range of subjects.

There are additional activities available that enhance the student's experience in the subject such as pharmaceutical chemistry sessions for 6th form students at Bangor University.

## ***Assessment***

### ***AS Units:- 40% of the qualification***

Unit 1 – Structure of Matter and Simple Reactions. Written exam. 1 hour 30 minutes.

Unit 2 - Energy, Rate and Chemistry of Carbon Compounds. Written exam. 1 hour 30 minutes.

### ***Units A2:- 60% of the qualification***

Unit 3- Physical and Inorganic Chemistry. Written exam 1 hour 45 minutes.

Unit 4- Organic Chemistry and Analysis. Written exam 1 hour 45 minutes.

Unit 5- Practical examination including an experiment task (3 hours) and experimental and analysis methods (1 hour).

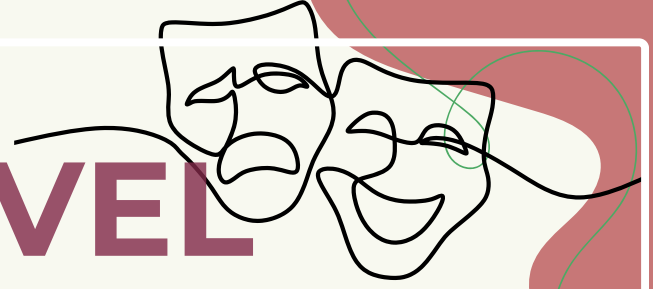
## ***Entry requirements***

Ideally, a Grade B or higher in GCSE Science/Additional Science/Chemistry.

## ***Progression Pathways***

The Chemistry industry is important and contributes billions of pounds to the UK's economy each year. It employs a large number of Chemists in research, sales, marketing and management. The intelligent training gained through studying chemistry gives you skills for a wide range of careers within Science and fields outside the sciences. Former pupils from the Chemistry Department at Ysgol Morgan Llwyd have gone on successfully to study subjects such as Chemistry, Forensic Chemistry, Medicine, Dentistry and Pharmacy at University.

# DRAMA AS/A-LEVEL



## ***Why choose this course?***

The course is one that combines practical and theory work, the two elements equal in value. There is an opportunity to develop performing or planning skills through working on various projects. You must attend the theatre and see live performances. The theory work is taught practically with emphasis on the work of the actor, the director and the designer.

## ***Assessment***

### ***AS Units***

Unit 1 –Performing Workshop. Practical - One performances One an extract from a play and a log of the work 60%

Unit 2 – a Text in Context - One hour examination paper. A study of one play,

### ***A2 Units***

Unit 3 – Practical exam based on two performances.

Unit 4 a Text in it context . Written examination based on the study of two plays.

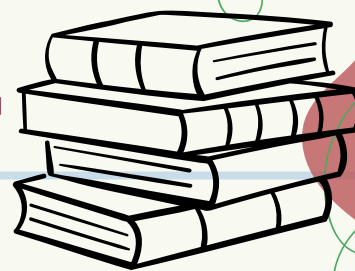
## ***Entry requirements***

A GCSE qualification in Drama would be of advantage as would be 5 GCSE's A\*-C grade.

## ***Progression Pathways***

Drama will help with a career in the performance world. It's also an advantage for people who want to go into careers such as the police or medical work as the ability to communicate and ad-lib is essential. The media world is also an option as well as jobs such as PR, press officers, arts admin work. You can also go on to work in the technical side of drama. There are a number of colleges that specialise in acting but also a number of universities that offer drama courses or joint-honours courses.

# ENGLISH LITERATURE AS/A-LEVEL



## ***Why choose this course?***

Studying English Literature was my first, and probably my biggest, step towards mental freedom and independence.' Ian McEwan, novelist

If you are interested in reading and discussing a wide range of poems, plays and novels, English Literature is an ideal subject for you. Studying literature at AS and A Level will take you further into the exploration of some of the most interesting fiction, poetry and drama, of modern times as well as that of the past. You will explore the ideas expressed in literature as well as learn more about the craft of writing and how writers use literary techniques to create meaning.

## ***Assessment***

AS (2 units)

Unit 1 - 20% (Examination) This unit will assess candidates' knowledge and understanding of: Pre-1900 fiction and Drama.

Unit 2 - 20% (Examination) This unit will assess candidates' ability to analyse and compare a selection of poetry texts.

A Level (the above plus a further 3 units)

Unit 3 - 20% (Examination) This unit will assess candidates' knowledge of: Pre-1900 Poetry and Unseen Poetry.

Unit 4 - 20% (Examination) This unit will assess candidates' knowledge of a Shakespeare Play.

Unit 5 - 20% (Non-examination Assessment) One 2500 – 3500 word assignment based on the reading of two prose texts from different periods, one Pre-2000 and one Post-2000, nominated by the centre.

## ***Entry requirements***

It is highly recommended that you should have at least a B grade in both GCSE English Language and English Literature in order to be accepted on this course. Do not consider embarking on this course if you are not prepared to read regularly, widely and independently.

## ***Progression Pathways***

English Literature is a highly regarded and useful qualification which opens doors to a variety of further education courses and professions. Successful students of this subject have gone on to become doctors, lawyers, teachers, policemen, journalists and many more exciting careers.



# FRENCH AS/A-LEVEL

## ***Why choose this course?***

The aim of the course is to build on what already learnt during the GCSE course, but developing and sharpening the communication and understanding skills in order for the learner to move forward to being a fluent speaker.

During the course, deeper information about the grammar is presented with a far greater range of specific theme vocabulary, as well as natural, common language used and spoken by French people in their daily lives. Oral and written communication skills are developed, the ability to understand and respond to what is heard and read in a wide variety of familiar and unfamiliar contexts. There will be emphasis on cultural matters with regular comparisons between the methods and traditions of living in Britain and countries who speak French.

## ***Assessment***

AS UNITS (2 Units)

UG UNIT 1 : SPEAKING

Non-exam assessment: 12-15 minutes (plus additional 15 minutes preparation time) 12% of qualification 48 marks

AS Unit 2: Listening, reading, translation and critical response in writing

Written examination: 2 hour 30 minutes 28% of qualification 84 marks

A LEVEL (the above plus a further 3 units)

A2 Unit 3: Speaking

Non-exam assessment: 11-12 minutes 18% of qualification

Independent research project

A2 Unit 4: Listening, reading and translation

Written examination: 1 hour 45 minutes 30% of qualification 100 marks

A2 Unit 5: Critical and analytical response in writing (closed-book)

Written examination: 1 hour 30 minutes 12% of qualification 40 marks

One essay question –based on the study of one literary work taken from the prescribed list

## ***Entry requirements***

A GCSE in French with grade B or above.

## ***Progression Pathways***

A foreign language is a prestigious, academic qualification that is admired and respected throughout the world.

Remember that only 20% of the population of the world can speak English. Being able to communicate in a modern foreign language will make learning a second or third or fourth modern foreign language so much easier!

# GEOGRAPHY AS/A-LEVEL



## **Why choose this course?**

Geography students hold the key to the world's problems." – Michael Palin, 2011

Geography is a subject that researches the interaction between people and the environment. The AS/A Level course provides the opportunity to learn about the different processes, matters and physical and human solutions on a global, national and local scale. For example, we look at how different glacial landforms are formed; how places change over time and the challenges faced in the 21st Century.

## **Assessment**

### **Year 12**

Unit 1: Changing Landscapes – [2 hour exam – 24% of qualification]

Section A: Changing Landscapes - Glaciated processes and landforms; the interaction between glaciers and people; strategies to manage them.

Section B: Tectonic Hazards - volcanoes, earthquakes and tsunamis; human factors that affect the level of risk; responses to hazards.

Unit 2: Changing Places – [1 hour 30 minutes exam – 16% of qualification]

Section A: Changing Places - reasons for economic and social changes; urban areas; rural areas.

Section B: Fieldwork Investigation in Physical and Human Geography – data response on fieldwork; One day of Physical fieldwork and one day of Human fieldwork to be completed in North Wales.

### **Year 13**

Unit 3: Global Systems and Global Governance - [2 hour exam – 24% of qualification]

Water and carbon cycles; global governance (changes and challenges) e.g. managing oceans and migration; 21st Century Challenges

Unit 4: Contemporary Themes in Geography – [2 hour exam – 16% of qualification]

Tectonic hazards; China's economic growth and challenge; Energy challenges and dilemmas

Unit 5: Independent Investigation - 3000-4000 word non-exam assessment based on the collection of both primary data and secondary information [20% of the qualification]

## **Entry requirements**

A grade C or above in GCSE Geography is ideal but it's possible to study the subject if not taken at GCSE if you have 5 GCSE's Grade A\*-C including Welsh and Mathematics.

## **Progression Pathways**

Geography is a subject that develops a variety of literacy, numeracy, ITC and problem solving skills. These are very attractive to Universities and employers. As a subject, Geography connects science with the arts, therefore it's possible to use the subject to get access to both kinds of degrees. Geography can lead to jobs in fields such as; land planning use, environmental management; geological and civil engineering; the public sector and many more.

# HEALTH & SOCIAL CARE AS/A-LEVEL



## ***Why choose this course?***

The GCE AS and A level qualification in Health and Social Care, and Childcare is suitable for post-16 learners interested in learning about the lifelong development and care of individuals from conception to later adulthood. Learners will follow a broad study of Health and Social Care, and Childcare at AS, and can then choose between two pathways at A2 to develop their depth of knowledge and understanding in either childcare or adult health and social care.

## ***Assessment***

The GCE AS and A level qualification in Health and Social Care, and Childcare has been divided into a total of six units, two AS units (Units 1 and 2) and four A2 units (Units 3,4,5 and 6). A Level learners study a total of four units: two AS units plus the two A2 units related to their chosen pathway.

Unit 1: Promoting health and well-being (external exam)

Unit 2: Supporting health, well-being and resilience in Wales (internal assessment)

Unit 3: Theoretical perspectives of children and young people's development (external exam)

Unit 4: Supporting the development, health, well-being and resilience of children and young people (internal assessment)

Unit 5: Theoretical perspectives of adult behaviour (external exam)

Unit 6: Supporting adults to maintain health, well-being and resilience (internal assessment)

50% of the GCE AS and A level qualification in Health and Social Care, and Childcare is internally assessed and the other 50% is externally assessed. Two externally-set, internally marked assignments in addition to two external exams must be completed successfully.

## ***Entry requirements***

The qualification offers a suitable progression pathway for learners who have studied the Health and Social Care, and Childcare qualification at GCSE and achieved a C grade or above. Learners who have achieved 5A\*-C in other subjects including Welsh, Maths and Science can also follow the course.

## ***Progression Pathways***

This qualification provides a suitable foundation for the study of health and social care through a range of higher education courses, such as nursing, medicine, teaching and social care; or into employment. Learners may also progress to other qualifications within the Health and Social Care, and Childcare suite either at a further education college or along with employment.



# HISTORY AS/A-LEVEL



## ***Why choose this course?***

History isn't a subject that's stuck in the past. Far from it. Historical events are what has shaped society."

History A Level encourages you to understand and think intelligently about aspects of modern history. It involves much more than just learning vast amounts of factual information. What most students find most rewarding in History is the attempt to understand, evaluate and analyse the past.

## ***Assessment***

### ***AS Units***

AS Unit 1 POLITICS, PROTEST AND REFORM IN WALES AND ENGLAND c.1780-1880

Period Study. Written examination: 1 hour 30 minutes. 20% of qualification.

AS Unit 2 GERMANY: DEMOCRACY TO DICTATORSHIP c.1918-1945

Part 1: WEIMAR AND ITS CHALLENGES c.1918-1933

Depth Study: Part 1. Written examination: 1 hour 45 minutes. 20% of qualification.

### ***A2 Units***

A2 Unit 3 THE AMERICAN CENTURY c.1890-1990

Breadth Study. Written examination: 1 hour 45 minutes. 20% of qualification.

A2 Unit 4 GERMANY: DEMOCRACY TO DICTATORSHIP c.1918-1945

Part 2: NAZI GERMANY c.1933-1945

Depth Study: Part 2. Written examination: 1 hour 45 minutes. 20% of qualification.

A2 Unit 5 Historical Interpretations. Non-examination assessment (coursework): 3000-4000 words. 20% of qualification.

## ***Entry requirements***

A grade C or above in GCSE History is ideal but it's possible to study the subject if not taken at GCSE if you have 5 GCSE's Grade A\*-C including Welsh and Mathematics.

## ***Progression Pathways***

The A/AS level History course gives the opportunity to develop further the conceptual skills and understanding developed at GCSE level. History A level provides students with a wide range of transferable skills. These are excellent preparation for both higher education and a professional career. Marketable skills include: a talent for clear expression, both oral and written; putting forward ideas and arguments in a concise manner; gathering, investigating and assessing material; basing conclusions on research and generating ideas; organising material in a logical and coherent way.

Your A Level in History gives you knowledge and skills which will prepare you for higher education, and which are also useful in any career

History students find employers respect and desire the skills they acquire. Popular career routes include education such as research or teaching, politics, law, business, social care, accounting, broadcasting and journalism.

# LAW AS/A-LEVEL



## ***Why choose this course?***

It is an exciting time to study law through the medium of Welsh. Devolution has created new opportunities for Welsh-medium practitioners in the legal world. These opportunities are evolving with legal positions in the Assembly, and as a new body of Welsh law develops, there is a demand for individuals with a qualification in law through the medium of Welsh. With new language measures in place, individuals have more rights to receive services including legal services through the medium of Welsh.

## ***Assessment***

### ***AS Units***

AS Unit 1. The Nature of Law and the Welsh and English Legal System

Period Study. Written exam: 1 hour 45 minutes. 25% of the qualification.

AS Unit 2. The Law of Tort

Detailed Study: Part 1. Written exam: 1 hour 30 minutes. 15% of the qualification.

### ***Advanced Units***

A2 Unit 3. Criminal Law and Human Rights Law

Broad Study. Written examination: 1 hour 45 minutes. 30% of the qualification.

A2 Unit 4. Criminal Law and Human Rights Law

Detailed Study: Part 2. Written examination: 2 hours. 30% of the qualification.

## ***Entry requirements***

5 GCSEs Grade A\*-C including Welsh and Mathematics.

## ***Progression Pathways***

AS / A Level Law provides the opportunity for pupils to develop strong communication skills and the ability to develop a balanced argument when considering legal concepts. It develops a detailed understanding of public, constitutional and private law. Your A level in law will provide you with the knowledge and skills that will be useful in any career and it will also be a good preparation for higher education. The legal knowledge and skills acquired by the qualification are respected by employers.

During the qualification you will develop an understanding of public and private law in the context of English and Welsh law. By undertaking this qualification, pupils develop an understanding of the importance of law within society and how it protects our rights.

Popular career paths include law, the police, politics, business, accounting, broadcasting and journalism.

# MATHEMATICS AS/A-LEVEL



## ***Why choose this course?***

The Mathematics department offers a number of different courses in the three areas of the subject, namely Pure Mathematics, Mechanics and Statistics. Everyone must study Pure Mathematics (Unit 1 and Unit 3) and Applied Mathematics (Unit 2 and Unit 4). The Applied Mathematics is a combination of Mechanics, which corresponds to Physics and Engineering, and Statistics, which has strong connections with Geography, Biology, Business Studies and Economics. Unit 1 and Unit 2 are studied in year 12 with Unit 3 and 4 studied in year 13.

## ***Assessment***

Unit 1 Pure Mathematics A, 2 hour 30 minutes exam, 120 marks, 25% of A2 grade.

Unit 2 Applied Mathematics A, 1 hour 45 mins exam, 75 marks, 15% of A2 grade.

Unit 3 Pure mathematics B, 2 hour 30 minutes exam, 120 marks, 35% of A2 grade.

Unit 4 Applied Mathematics B, 1 hour 45 mins, exam, 80 marks, 25% of A2 grade.

Unit 2 Statistics 40 marks Mechanics 35 marks

Unit 4 Statistics 40 marks Mechanics 40 marks

## ***Entry requirements***

To follow the course, you must have the following qualifications:

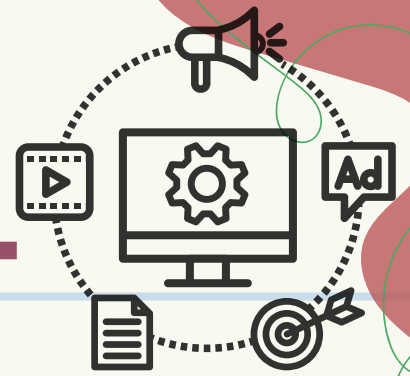
GCSE A\*/A/B Higher Tier

## ***Progression Pathways***

A' level Mathematics is considered a valuable preparation for a wide range of degree courses and with one or two science subjects, can lead to any of a wide range of engineering or scientific courses as well as Finance and Business. In terms of careers, Mathematics in its own right is the basis of careers in Operational Research and the Actuarial field and opens opportunities to Computing, Accountancy, Commerce, Industry and the Civil Service. Maths also leads to careers such as teaching, lecturing, banking, engineering, management and research.



# MEDIA STUDIES AS/A-LEVEL



## ***Why choose this course?***

Media Studies develops a wide range of skills that can be transferred to a number of different degree courses e.g. Journalism, Education, Graphic Art, Industrial Studies, Sociology, Modern and Modern History. You will:

- Have the opportunity to learn how to analyse a wide range of media material that is watched/listened/read by people daily.
- Learn how to shoot films and edit video sequences on digital equipment.
- Develop an understanding of worldwide media matters and industries.

Media Studies is becoming more popular at a Higher Education level because the Media Industries are growing and as more jobs associated with the media become available.

## ***Assessment***

### ***AS Units***

Unit 1: Investigating the Media. Written examination: 2 hours 15 minutes. 24% of whole qualification.

Unit 2: Creating a Media Production. Non-exam assessment. 16% of whole qualification.

### ***A2 Units***

Unit 3: Media in the Global Age. Written examination: 2 hours 30 minutes. 36% of whole qualification.

Unit 4: Creating a Cross-Media Production. Non-exam assessment. 24% of whole qualification.

## ***Entry requirements***

Ideally, the candidate will have followed the GCSE course, but this is not mandatory. It is better to speak to the teacher to discuss this further.

## ***Progression Pathways***

Further education/higher education courses – Journalism, Media, Film Studies, Creative Arts.

There are a number of career opportunities open to pupils following this course, including; Journalist, cameraman, film/television editor, tv/radio presenter, web designer, IT technician, teacher.

# MUSIC AS/A-LEVEL

## ***Why choose this course?***

Are you interested in performing, composing and listening to music? Do you enjoy practical and creative activities? Are you considering a career involving music in the future? Are you a creative and talented person who enjoys extracurricular activities?

If you are this person, it's possible that the AS/A Level Music course is an option for you.

The AS/A Level Music course gives you the opportunity to develop your understanding further and builds on the skills you already possess following the GCSE Music course or extra instrument/voice lessons. The music course allows you to study further at University and a subject that offers public performing/composing opportunities through various extracurricular activities.

## ***Assessment***

The course combines internal and external assessment.

### ***AS Units***

MU1 Performing ( 15 %) Solo and / or ensemble performance. External Assessment

MU2 Composing (15%) Produce two contrasting compositions. Internal Assessment

MU3 Appraising (20%) One listening exam in two parts. External Assessment

### ***A2 Units***

MU4(B) Performing (20 %) Solo and / or ensemble performance. External Assessment

MU5(A) Composing (15%) Two contrasting compositions. Internal Assessment

MU6 Appraising (15%) One written exam in two parts. External Assessment

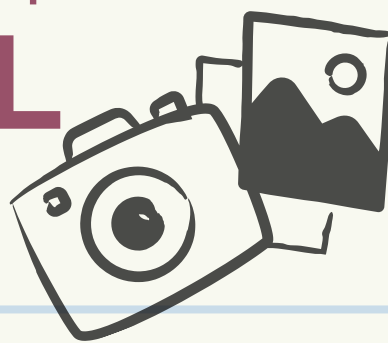
## ***Entry requirements***

Ideally, you should have a grade 'B' or higher in GCSE Music or a Grade 4 or higher in an external exam e.g. ABRSM.

## ***Progression Pathways***

The possibilities available from following the AS/A Music course are endless. Entry to University or Music College to study music as a subject; a professional career as a performer or composer; College lecturer or music teacher in a secondary school; primary school teacher, or peripatetic or private instrument/voice teacher. Music is very appealing to Universities because of the additional skills that are developed: especially to courses such as Medicine and Dentistry and any job that needs good communication skills when dealing with the public. As a subject to study, the doors the courses can open are very exciting.

# PHOTOGRAPHY AS- LEVEL



## ***Why choose this course?***

The course is arranged into one coursework unit, where you will explore-

- The history of photography
- Technical elements of photography
- The formal elements within photography
- Composition
- Portrait photography
- Still life photography
- Landscape photography
- Use of digital processes, editing and printing
- Use of film and moving image

You will then work on producing a portfolio and personal outcomes based upon a theme of your choice.

You will be expected to work independently outside of contact time, work to deadlines and be able to organise your workload and time wisely.

## ***Entry requirements***

The pupils should have a grade C or higher in GCSE Art and Design. Some exceptions are made depending on their performance in KS3.

## ***Progression Pathways***

This course could lead to careers in the following fields-

- \* The press
- \* The visual arts
- \* The media
- \* Graphic Design
- \* Marketing
- \* Fashion
- \* Advertising



# PHYSICAL EDUCATION AS/A-LEVEL



## ***Why choose this course?***

Are you interested in Sports? Do you dream of working within the sporting world in the future? Are you an enthusiastic person who enjoys teaching in a practical environment? If this is you, then it's possible that the Physical Education AS/A course is an option for you. The Physical Education AS/A course gives you the opportunity to develop your understanding of the Sports world in a practical environment as well as theory with 40% of the course assessed internally and the rest in an exam paper.

## ***Assessment***

The course will be assessed through exams and internal assessments.

### ***AS Units***

AS Unit 1 – Exploring physical education (1 ¾ hour written examination)

AS Unit 2 – Improving personal performance in physical education (Internal assessment of practical performance, personal performance profile and practical performance as a coach or official)

### ***A level Units***

A2 Unit 3 – Evaluating physical education (2 hour written examination)

A2 Unit 4 – Refining personal performance in physical education (Internal assessment of practical performance and an investigative research project)

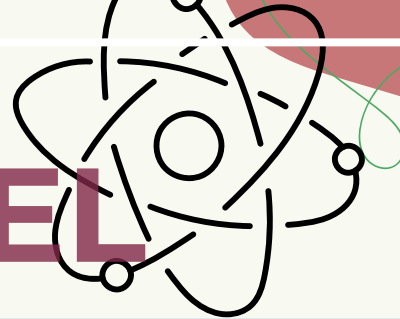
## ***Entry requirements***

Ideally you require a grade 'B' or above in GCSE Physical Education.

## ***Progression Pathways***

The opportunities available as a result of following an AS/A Level Physical Education course are endless. From following physiotherapy, teacher training, sports psychology, medicine, sports coaching and media courses at university to leadership or umpiring courses in the local colleges. The doors the course can open are very exciting. As well as these courses, the course can also support your work in other courses, mainly Biology, Chemistry and Psychology.

# PHYSICS AS/A-LEVEL



## ***Why choose this course?***

This is a very exciting time to be studying Physics. With more programmes on the television renewing and improving the image of the subject, and also the opening of the CERN particle accelerator in Switzerland, it is a very current and interesting subject. Physics is the primary subject in Science. It's a very important subject to study for any student who is eager to follow a scientific or engineering career. It can also provide the tuition needed in order to solve problems in a systematic and logical manner, making it a valuable qualification for a number of employers.

In September 2015, the WJEC A Level Physics course was adapted and renewed to make it more relevant to university courses and the workplace. There is no doubt that is an interesting time for students and Physics teachers!

## ***Assessment***

The course assessment will be divided into five units over two years of study:

**Unit 1:** Motion, Energy and Matter – Written examination: 1 hour 30 minutes. 20% of the qualification.

**Unit 2:** Electricity and Light – Written examination: 2 hours 15 minutes. 25% of the qualification.

**Unit 3:** Oscillations and Nuclei - Written examination: 2 hours. 25% of the qualification.

**Unit 4:** Fields and Options – Written examination: 2 hours. 25% of the qualification.

**Unit 5:** Practical Examination – 2 hour exam. 10% of the qualification.

## ***Entry requirements***

A grade B in GCSE Physics or in Science and Additional Science at least.

A grade B in Mathematics at least.

A\* or A grades in the two qualifications above would be preferable.

## ***Progression Pathways***

An AS or A Level qualification in Physics is recognised as a very valuable qualification by employers. Numeracy, reasoning and problem solving skills are developed and these are useful for students that wish to study the subject further, or in subjects where these skills are essential such as Engineering, Economics, Medicine, Meteorology and Geology.

# POLITICS AS/A-LEVEL



## ***Why choose this course?***

If you want to challenge the views of politicians and debate meaningful issues, then this course is for you!

The Government and Politics A Level course gives you the knowledge to understand how government works particularly in the UK, but also in other countries such as the US. At AS Level you will study the political system in the UK whilst A2 units will concentrate on America.

## ***Assessment***

### ***AS Units***

Unit One examines Government in Wales and the United Kingdom through a study of: sovereignty, power and accountability; The Government of the UK and How devolution works in the UK.

1 hour 30 minute exam worth 20% of final grade.

Unit Two examines Living and participating in a democracy through a study of: citizenship and rights; participation through elections and voting and participation through political parties, pressure groups and political movements.

1 hour 30 minute exam worth 20% of final grade.

### ***A2 Units***

Unit Three examines Political concepts and theories through a study of: Liberalism; Conservatism; Socialism and Nationalism.

2 hour 30 minute exam worth 30% of final grade.

Unit Four examines Government and Politics of the USA through a study of: democracy in America; government of the USA and participation and democracy in US politics.

2 hour 30 minute exam worth 25% of final grade.

## ***Entry requirements***

A grade C or above in GCSE History is ideal but not essential.

## ***Progression Pathways***

An A Level in Government and Politics gives you knowledge and skills which will prepare you for higher education, which are also useful in any career.

The course will help you gain access to university to study Social Sciences, including Politics and Sociology, Law, Medicine, History, English and many others. If you want to work in local or national government and make a difference to society, this course is a valuable first step.



# PSYCHOLOGY AS/A-LEVEL



## ***Why choose this course?***

The study of psychology enables us to gain a better understanding of our own behaviour, as well as that of other people. You will develop an understanding of different areas of psychology such as memory, eyewitness testimony, brain structure, stress, social influence, dream analysis and many others. You will also learn how to conduct psychological research and develop critical thinking skills which will enable you to analyse and evaluate evidence in a scientific way.

## ***Assessment***

### ***AS Units***

Unit 1 Psychology: From the Past to the Present (20%)

Unit 2 Researching Behaviour (20%)

### ***A2 Units***

Unit 3 Implications in the Real World (40%)

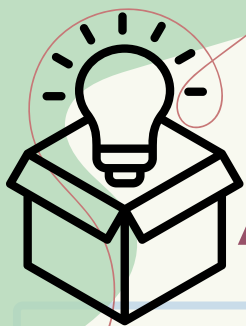
Unit 4 Applied Research Methods (20%)

## ***Entry requirements***

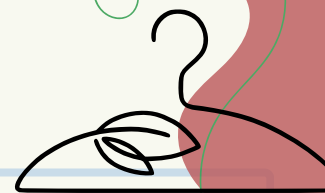
Minimum C grade GCSE pass in Science,

## ***Progression Pathways***

The course provides a foundation for the study of Psychology at degree level. It also allows for progression to the next level of vocational qualifications e.g. police, health, care, sports management, marketing, teaching or media.



# PRODUCT DESIGN / FASHION AND TEXTILES/ ENGINEERING DESIGN **AS/A-LEVEL**



## ***Why choose this course?***

The specification encourages you to use creativity and imagination when applying iterative design processes to develop and modify designs, and to design and make prototypes that solve real world problems, considering their own and others' needs, wants, aspirations and values. The specification enables learners to identify market needs and opportunities for new products, initiate and develop design solutions, and make and test prototypes. Learners should acquire subject knowledge in design and technology, including how a product can be developed through the stages of prototyping, realisation and commercial manufacture. Learners should take every opportunity to integrate and apply their understanding and knowledge from other subject areas studied during key stage 4 and those subjects they are studying alongside GCE design and technology.

## ***Assessment***

AS The subject content for AS Design and Technology will be assessed in the written examination and non-exam assessment (NEA). Learners take a single examination in one of the following endorsed routes: Engineering Design; Fashion and Textiles; Product Design.

A2 The subject content for A2 Design and Technology will be assessed in the written examination and non-exam assessment (NEA). Learners take a single examination in one of the following endorsed routes: Engineering Design; Fashion and Textiles; Product Design.

## ***Entry requirements***

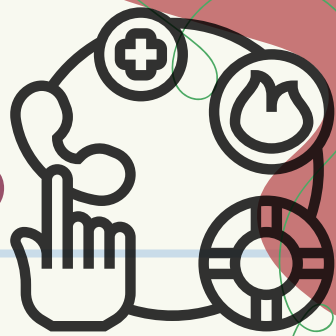
A GCSE grade of C and above is required to undertake an A-Level in Product Design / Fashion and Textiles.

## ***Progression Pathways***

There are many opportunities in the creative industries after you study Design and Technology. Here are a few to career paths to think about: **ART AND DESIGN** - Graphic Designer, Sculptor, Gallery Curator **IT AND THE INTERNET** - Games Developer, Software Programmer, Network Engineer, Web Designer **FAST CONSUMER GOODS** - Mechanical Engineer, Product Designer, Industrial Designer, Market Researcher

**FASHION AND BEAUTY** - Fashion Designer, Dressmaker, Garment Technologist, Fashion Stylist **CONSTRUCTION** - Tradesperson, Architect, Construction Manager **MANUFACTURING** - Food Technologist, Manufacturing Engineer, Manufacturing Manager Why don't you google some of these jobs? For instance, an Architect will design and create plans and technical drawings of buildings.

# PUBLIC SERVICES BTEC- LEVEL 3



## ***Why choose this course?***

The aim of the course is lay a foundation for a career in the Public Services, e.g. with the Police, Fire and Rescue Service, the Army or prison service. With a new prison coming to Wrexham, there will be a demand for jobs in this sector, and the need for Welsh speakers in the Public Sectors is very, very high. The course is suitable for anyone interested in Public Services work with an interest in a career in that field. It also includes political, social and physical elements that appeal to a number of students.

## ***Assessment***

There is no exam in this subject at the moment. The course is assessed through a series of assignments and these will be presented in written report forms, PowerPoint presentation, oral discussion and individual oral presentation. The pupils will be awarded Pass, Merit or Distinction in these assignments.

There are 3 core units to follow in the fields of Government, Leadership and Citizenship and 2 units of choice. At least one of these will be done during a residential course in Glanllyn in order to learn skills for outdoor activities.

## ***Entry requirements***

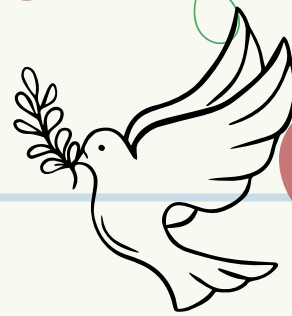
There are no specific requirements but you are expected to have gained 5 A\*-C GCSEs. As you are assessed through course work, it's important you can work independently and organise you work effectively.

## ***Progression Pathways***

The clearest pathway is a career in Public Services. Some pupils will go on to a training course, in the Armed Forces for example. Others will wish to study the course at a higher level such as a degree in Public Services. The qualification is a good foundation for a career with the police, the fire and rescue service, prison service or even in the outdoor adventure field.



# RELIGIOUS STUDIES AS/A-LEVEL



## ***Why choose this course?***

Is God real?

Why is there so much evil in the world today?

Why is Buddhism the fastest growing religion today? Why do people become extremists?

Is Euthanasia an easy decision?

If you enjoy discussing and thinking of the world today, then AS Religious Studies is for you. It gives opportunities to: Study the relationship between religion and culture; consider the moral values and individual aspects, faith communities or modern society; Develop reasoning skills about matters concerning values, attitudes and actions; and develop the ability to express a responsible opinion about moral teaching and significant matters.

## ***Assessment***

### ***AS Units***

UNIT 1 – An Introduction to the Study of Religion (1 hour 15 min exam)

UNIT 2 - An Introduction to Philosophy of Religion / Religion and Ethics (1 hour 45 min exam)

### ***A Level Units***

UNIT 3- Study of a Religion - Buddhism (1 hour 30 min exam)

UNIT 4 - Religion and Ethics (1 hour 30 min exam)

UNIT 5 – Philosophy of Religion (1 hour 30 min)

## ***Entry requirements***

The Religious Studies course is open to those who have studied the GCSE course. The subject can be done without studying the GCSE but they must show interest in the subject and have a grade C or above in Welsh GCSE.

## ***Progression Pathways***

The Religious Studies course is a resource that can lead you in a number of directions. Universities see it as a very valuable tool even if they don't intend to study the subject further in the colleges. Because of the skills and matters discussed, the students can go on to courses/careers connected to Politics and law, including immigration and international relations; Fields within medicine; Managerial work; Journalism and the media; Social/youth and community work; Traveling and tourism including the hotel and catering industry and Careers in the police, education, armed forces.

# WELSH AS/A-LEVEL



## ***Why choose this course?***

The Welsh AS and A Level course is a qualification that encourages candidates to develop their interest and enthusiasm in Welsh and Welsh Literature. It is aimed towards developing the student's skills to express themselves confidently in Welsh in writing and orally. As well as this, their ability to respond to literature and contemporary materials is developed whilst igniting an appreciation of the legacy and culture of Wales.

## ***Assessment***

### ***AS Units***

Unit 1. Film, Drama and Speech 15%. Oral Exam. Approx. 1 hour for each group.

Unit 2. 10%. Internal Assessment – Written Course Work

Unit 3. Using Language and Poetry 15%. Written paper

### ***A2 Units***

Unit 4. The Novel and speech 20%. Oral Exam – approx.  $\frac{3}{4}$  hour for each group.

Unit 5. Prose in the Middle Ages, Early Welsh Poetry (Hengerdd) and the Cywyddau 20%. Written Paper (2 hours)

Unit 6. Literature appreciation and Welsh in the Society 20%. Written Paper (2  $\frac{1}{4}$  hours)

## ***Entry requirements***

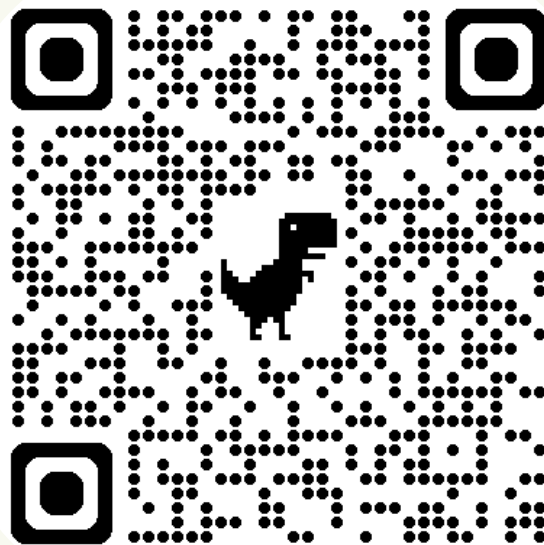
Before you are accepted on as AS Welsh First Language course, you should have studied Welsh First Language, Higher Tier as part of your GCSE course. It would be ideal if you have received a grade B or above in order to enjoy and cope with the course.

## ***Progression Pathways***

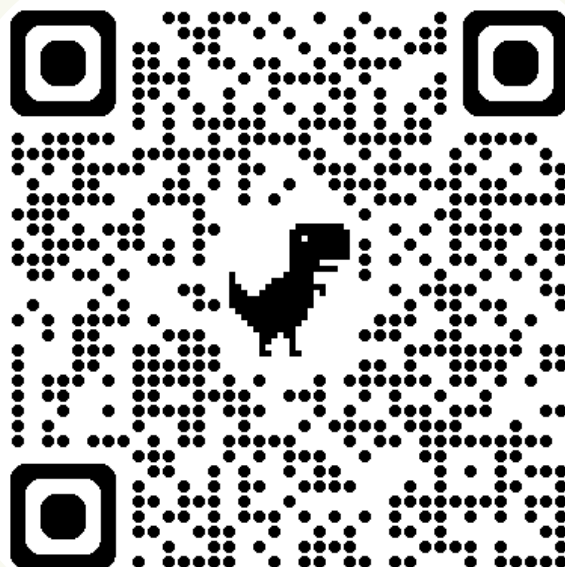
When studying Welsh to AS and A Level standard, you will open the doors to a number of opportunities in your future. It will give you a solid foundation for studying Welsh in an University and will also lead you to careers in education, in the public sector and in the private sector. The course will also give you a solid foundation for living and working in the modern, bilingual society in Wales.

# QR CODES

If you would like to access the prospectus online please scan the QR code:



WJEC exam board website:







## Ysgol Morgan Llwyd

### Derbynfa / Reception











01978 315050



Ysgol Morgan Llwyd, Cefn Road,  
Wrexham, LL13 9NG



[www.ysgolmorganllwyd.cymru](http://www.ysgolmorganllwyd.cymru)



[bocspost@ysgolmorganllwyd.  
wrexham.sch.uk](mailto:bocspost@ysgolmorganllwyd.wrexham.sch.uk)



@yml\_wrexham



@YsgMorganLlwyd



Ysgol Morgan Llwyd Wrexham